

**SLCR**  
LASERTECHNIK

# LASER marking to support animal WELFARE

Traceability of hides, skins and leather!



# Agenda

1. **SLCR Lasertechnik**
2. **Traceability through marking the hide with laser**

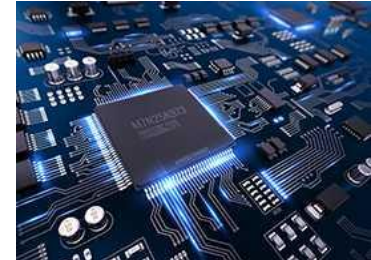
## laser systems – automation – customized machines

### SLCR (Selective Laser Coating Removal)

- ◆ More than 25 years efficiency and quality advantage in surface treatment using lasers
- ◆ Industrial de-coating, cleaning, pretreatment/ activation of surfaces
- ◆ Expertise from laser application, automation, specialized equipment
- ◆ Mobile and stationary systems – handheld to fully automated operation
- ◆ Custom sustainable system solutions

### SLCR laser systems

- ◆ Highest standards in treatment quality and process stability as well as reduced operating costs.
- ◆ Powerful and environmentally friendly alternative for a wide range of tasks for part treatments.
- ◆ Proven technology for automotive, aerospace, electronics and other industries





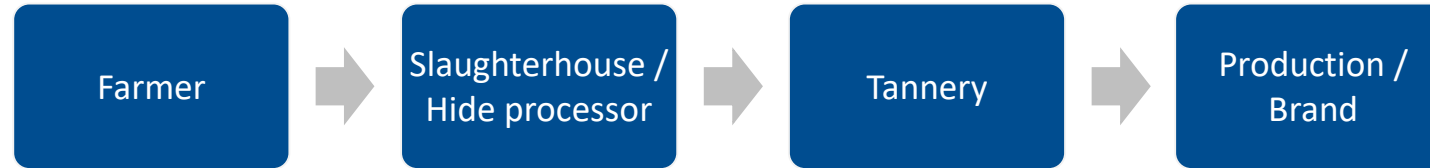
# Agenda

1. SLCR Lasertechnik
2. **Traceability through marking the hide with laser**

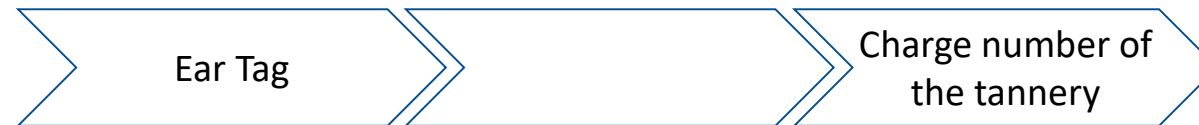
# Traceability through marking the hides with laser

## Why are we doing this

Process flow  
of the hide



Current situation of the  
traceability in the  
leather industry



No correlation between this two numbers

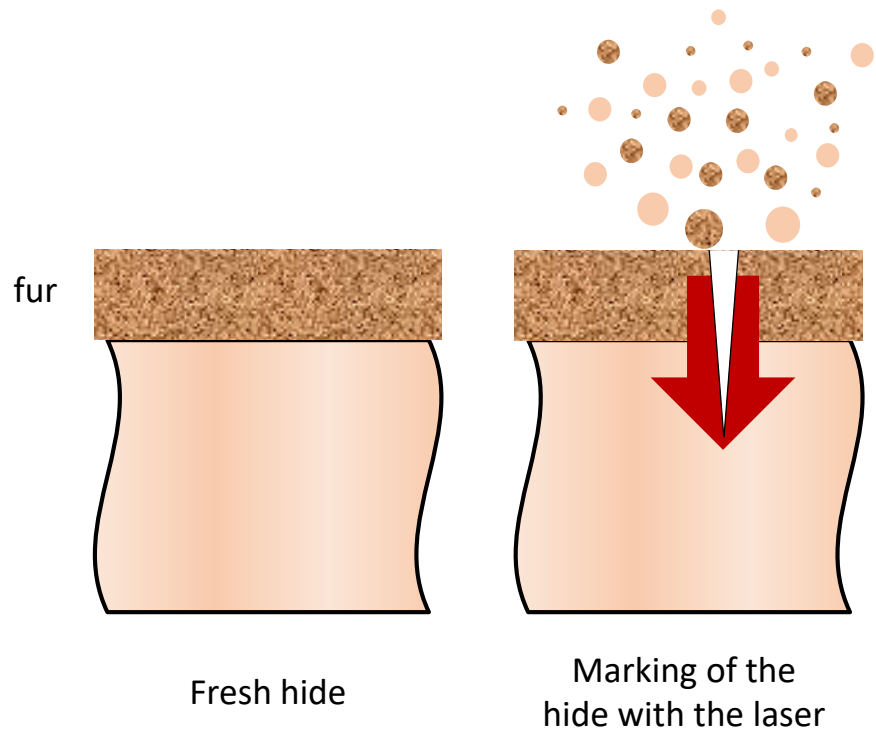
Solution for the gap  
in the traceability of  
the origin

Laser marking the Ear Tag number or a  
number related to the ear tag



# Traceability through marking the hides with laser

## General process of hide marking with laser

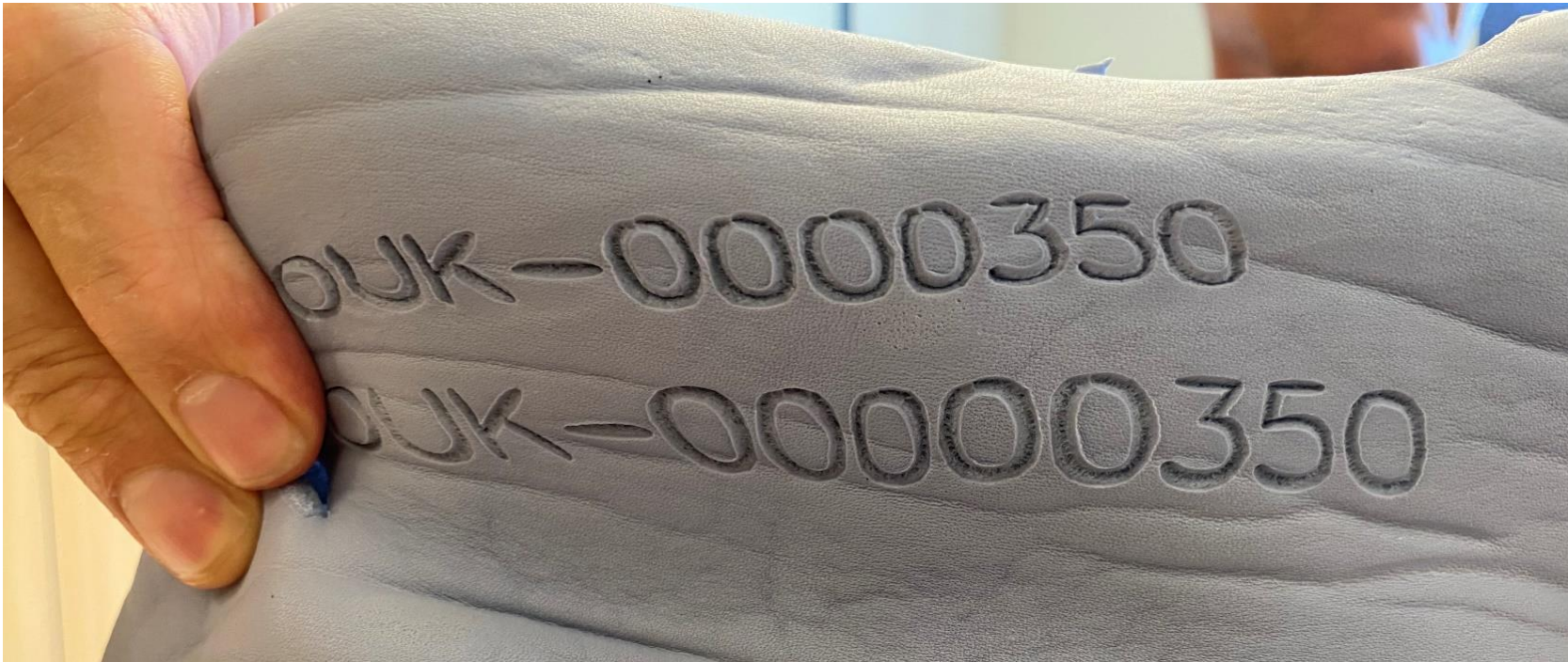


Patent by SLCR for METHOD AND DEVICE FOR APPLYING A CODE TO AN UNTREATED OR TREATED ANIMAL SKIN (EP 3269829)



# Traceability through marking the hides with laser

## Marked number in the tannery

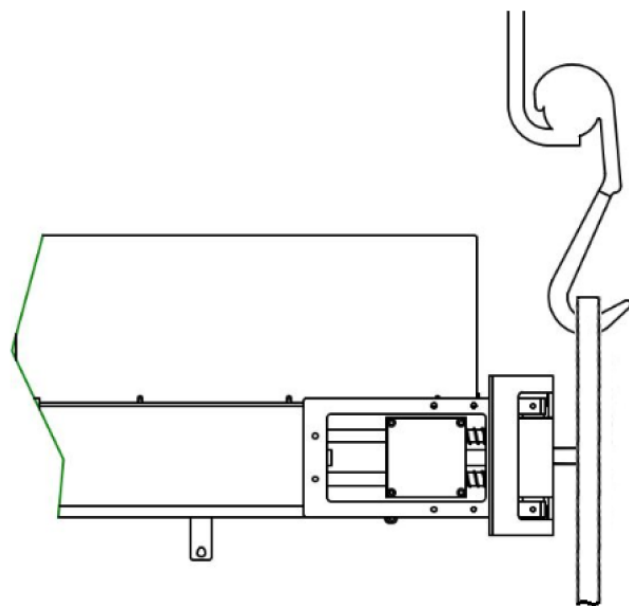


marked number with configuration depth ca. 1 mm

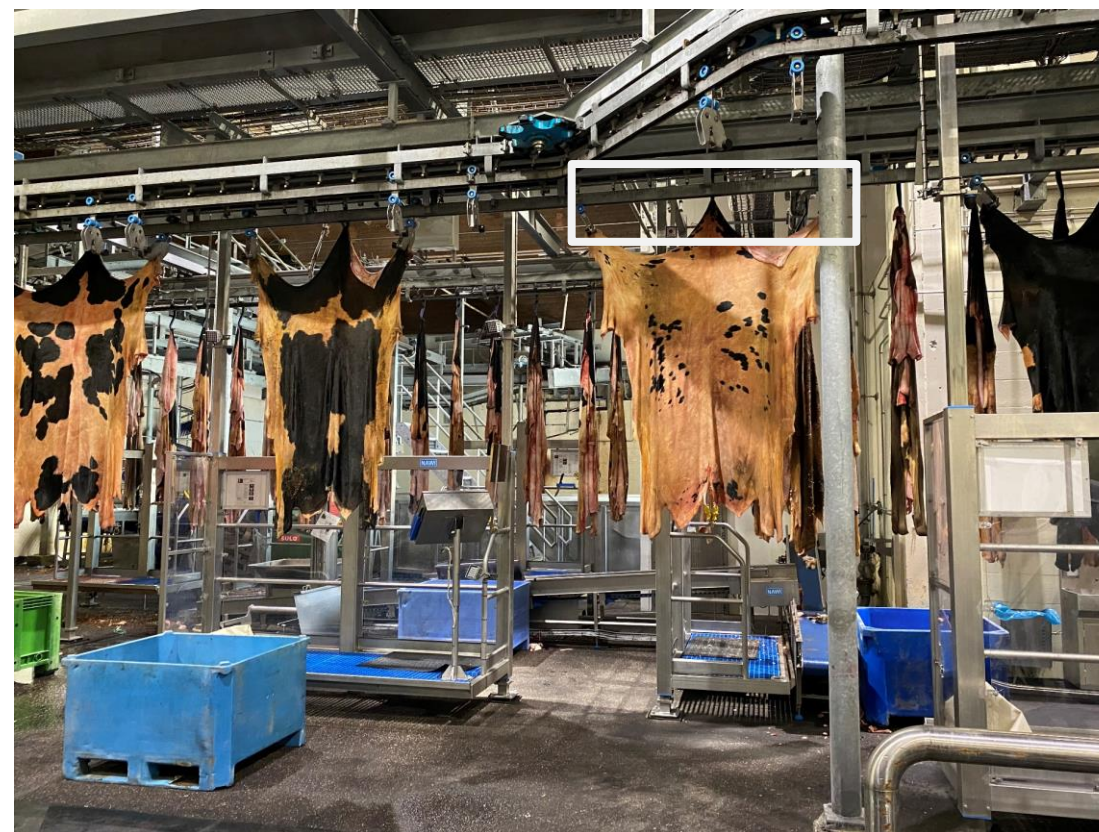
# Traceability through marking the hides with laser

## System configuration, fully automated

integrated in the hide processing of the customer (Oukro B.V.) in the Netherlands



principle of the marking unit



Location of the marking unit within the production



# Traceability through marking the hides with laser

## Marked number in the tannery

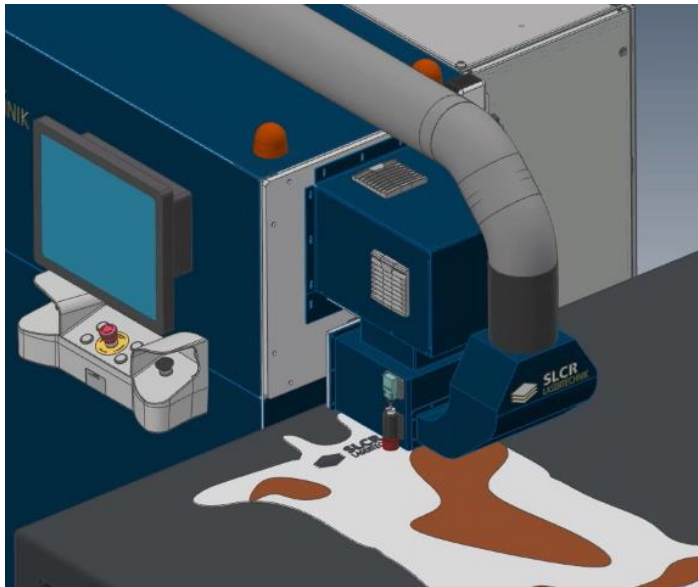


number by marking through the hide after splitting

# Traceability through marking the hides with laser

## System configuration, manual loading

A test system for proving the cutting out the number on fresh / salted hides



principle of the marking unit



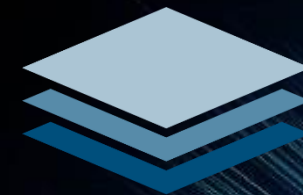
Location of the marking unit within the production

## advantages of the hide marking with laser

- ◆ close the information gap between the Slaughterhouse/Hide processor and the tannery
- ◆ mark that survives the tanning process
- ◆ permanent and precisely controllable marking
- ◆ adaptable to different production environments
- ◆ environmentally and user friendly
- ◆ low operating costs
- ◆ able to guarantee that you purchase sustainable raw material from animals grew up according to the highest welfare standards







**SLCR**  
LASERTECHNIK

Your partner for surface treatment

SLCR Lasertechnik GmbH

Willi-Bleicher-Straße 11

52353 Düren

[www.slcr.de](http://www.slcr.de)